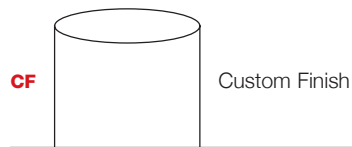


Pin Tumbler Line of Locks



Introduction	P 1				
Cam Locks	P 2				
Drawer/Door Locks	P 3				
T Bolt Lock	P 4				
Plunger Lock	P 5				
Ratchet Locks	P 6				
Keys	P 7				



Standard Plating Finish*** Special Plating Finishes***** Custom Plating Finish**

* Extended lead-time and plating lot charges may apply to Special and Custom finishes. Please call Kenstan for details.

Pin Tumbler Line of Locks

For excellent security, our **P** line offers a variety of lock types that can be keyed alike, individually or in groups. They can also be master keyed or grand master keyed using thousands of 4 and 5 Pin Tumbler key combinations in National D4291 and CCL R1 keyways.

Delivery

At Kenstan, we assemble every lock to order and strive to meet your requested in-house date. Our standard lead time is to ship within two weeks from the receipt of your order. Rush orders and emergency services are available.

Plating

The **P** line standard plating finish is Satin Chrome.

A wide range of special plating finishes is also available, including Polished Brass, Satin Brass, Matte Black, Polished Chrome, Statuary Bronze and Custom Finishes to match your showcase hardware.

Please note: Plating lot charges may apply to the special finishes – call for pricing.

Handing

Handing means the orientation of the key relative to the bolt movement. We can always orient the lock so the key is inserted vertically.

- **Right Handing** means the door hinges on the right side and locks on the left.
- **Left Handing** means the door hinges on the left side and locks on the right.
- **Vertical Handing** means the drawer is locked at the top.
- **Inverted Handing** means the drawer is locked at the bottom.

Key Control

Kenstan can register your keys and maintain your key plans by store, retail department, showcase/cabinets, or office and we maintain a historical database of key numbers. Keys should be secured when not in use.

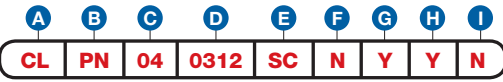
Key Retaining vs. Non-Key Retaining Lock Function

The **P** line standard operation is a non-key retaining function (non-captive). In this operational condition, the operating key can be removed in the unlocked position.

For higher security we recommend the key retaining (captive) function, which forces the key to be removed in the locked position only. The lock cannot be accidentally left in the open/unlocked position.

Item Number

To determine your item number enter the **RED** option code for each section as in the example below.



A Lock Style

CL Cam Lock

B Core Type

PN National Keyway
PC Corbin Keyway

C Housing Length

	MAXIMUM MATERIAL THICKNESS	BARREL LENGTH
04	3/4"	1-1/16"
05	7/8"	1-3/16"
06	1-1/8"	1-7/16"
07	1-1/2"	1-13/16"

D Cam Rotation

	LOCKED	OPEN
0312	3	12
0306	3	6
0603	6	3
0609	6	9
0912	9	12
0906	9	6
1203	12	3
1209	12	9

E Plating Finish

SC Satin Chrome
PB Polished Brass
CF Custom Finish

F Key Retaining

N No
Y Yes

G Keyed Different

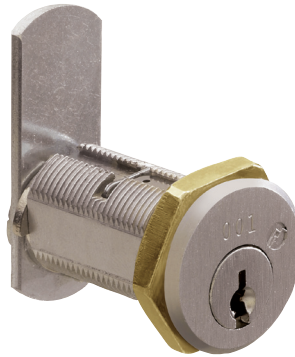
N No
Y Yes

H Stamp Lock

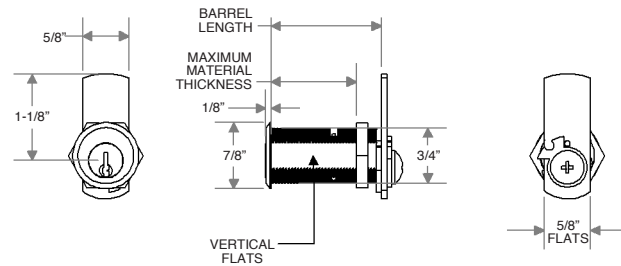
N No
Y Yes

I Master Keyed

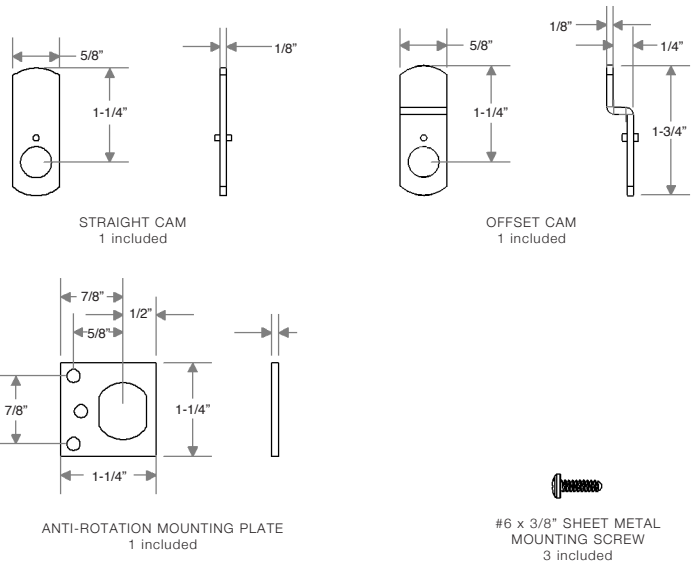
N No
Y Yes
G Grand Master



C HOUSING LENGTHS 04, 05, 06 and 07



LOCK PARTS

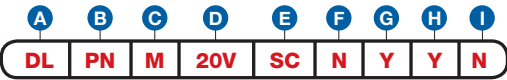


CALL KENSTAN FOR LOCK ILLUSTRATION.

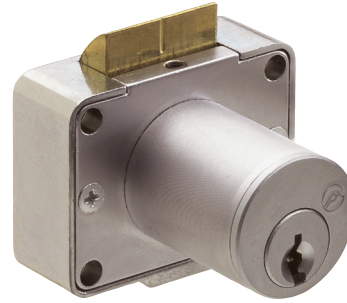
Price List and Data Sheet

Item Number

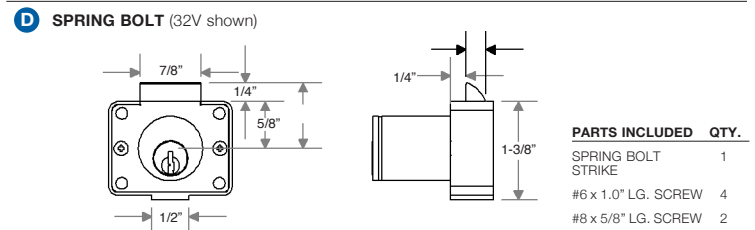
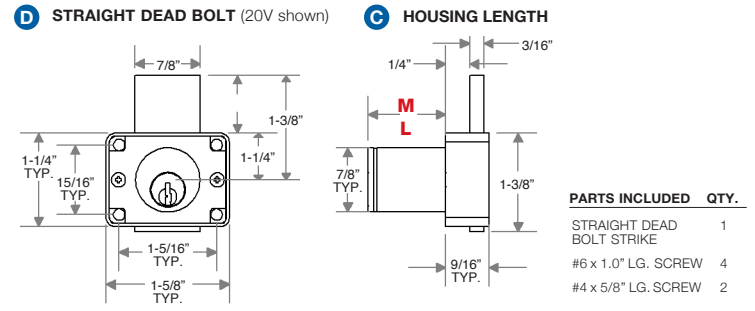
To determine your item number enter the **RED** option code for each section as in the example below.



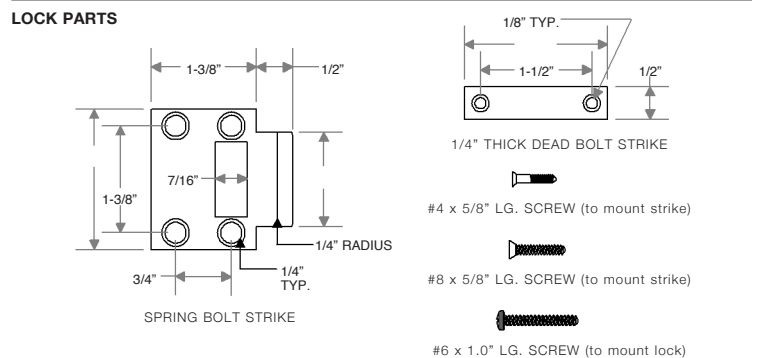
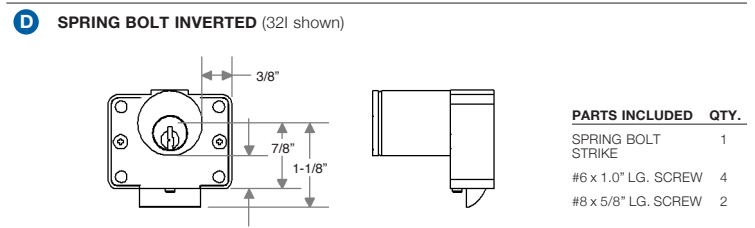
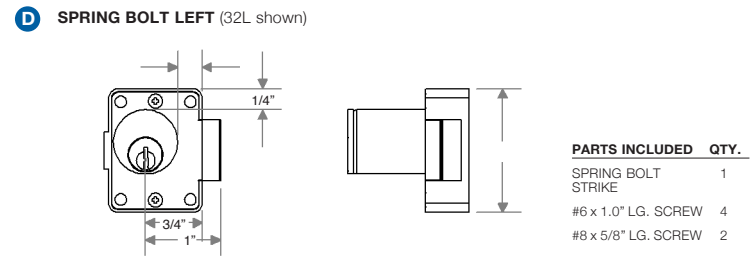
A	Lock Style	DL Drawer/Door Lock
B	Core Type	PN National Keyway PC Corbin Keyway
C	Housing Length	M 1" L 1-1/2"
D	Bolt Type	STRAIGHT DEAD BOLT 20R Right 20L Left 20I Inverted 20V Vertical SPRING BOLT 32R Right 32L Left 32V Vertical 32I Inverted
E	Plating Finish	SC Satin Chrome SB Satin Brass CF Custom Finish
F	Key Retaining	*Option available only on Straight Bolt model. N No Y* Yes
G	Keyed Different	N No Y Yes
H	Stamp Lock	N No Y Yes
I	Master Keyed	N No Y Yes G Grand Master



All dimensions shown are in the locked position.

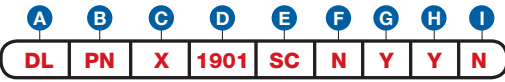


These spring bolt locks can be converted to Vertical, Inverted, Left or Right hand orientation.



Item Number

To determine your item number enter the **RED** option code for each section as in the example below.



- A Lock Style**
DL Drawer/Door Lock

- B Core Type**
PN National Keyway

- C Housing**
X No Option

- D Bolt Type**
T BOLT
1901 1-1/4"

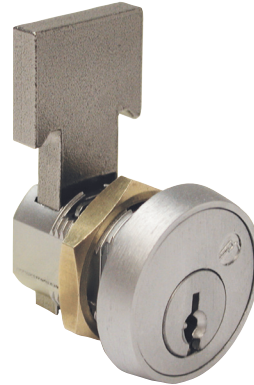
- E Plating Finish**
SC Satin Chrome
CF Custom Finish

- F Key Retaining**
N No

- G Keyed Different**
N No
Y Yes

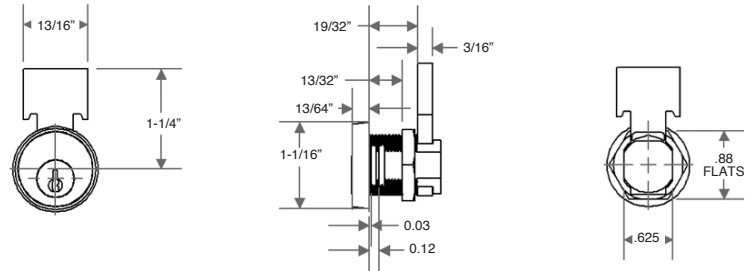
- H Stamp Lock**
N No
Y Yes

- I Master Keyed**
N No
Y Yes
G Grand Master



"Throw" (distance bolt travels from the locked to unlocked position) is 25/32".
All dimensions shown are in the locked position.

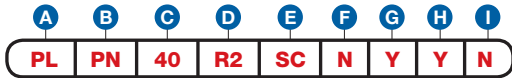
D "T" BOLT LOCK



Price List and Data Sheet

Item Number

To determine your item number enter the **RED** option code for each section as in the example below.



A Lock Style

PL Plunger Lock

B Core Type

PN National Keyway
PC Corbin Keyway

C Housing Style

40 Oval Flange

D Plunger Type/Length

ROUND SERIES
R2 7/16"

E Plating Finish

SC Satin Chrome
PB Polished Brass
CF Custom Finish

F Key Retaining

N No

G Keyed Different

N No
Y Yes

H Stamp Lock

N No
Y Yes

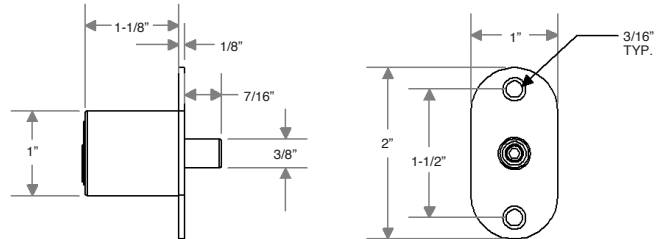
I Master Keyed

N No
Y Yes
G Grand Master

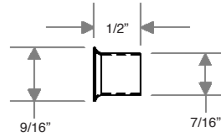


All dimensions shown are in the locked position.

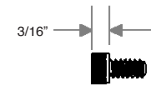
D ROUND SERIES



LOCK PARTS



PLUNGER CUP
1 included



PLUNGER EXTENSION
1 included



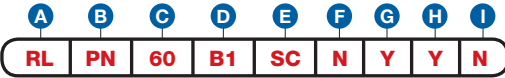
STRIKE LOCATOR
1 included



#6 x .75" LG. MOUNTING SCREW
2 included

Item Number

To determine your item number enter the **RED** option code for each section as in the example below.



A Lock Style
RL Ratchet Lock

B Core Type
PN National Keyway
PC Corbin Keyway

C Housing Style
60 Ratchet

D Bolt Type
B1 Standard

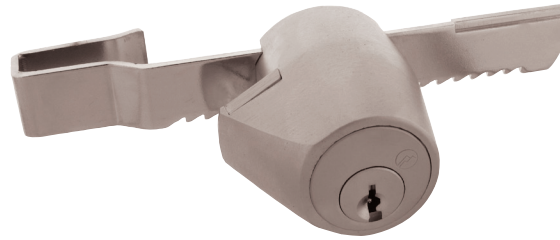
E Plating Finish
SC Satin Chrome
CF Custom Finish

F Key Retaining
N No

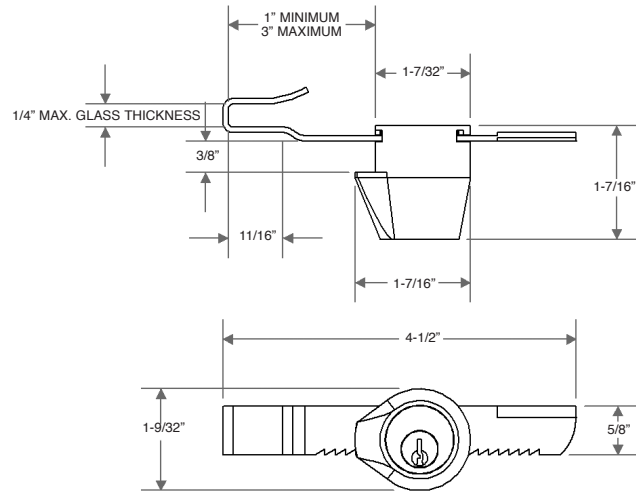
G Keyed Different
N No
Y Yes

H Stamp Lock
N No
Y Yes

I Master Keyed
N No
Y Yes
G Grand Master



D STANDARD BAR B1



Pin Tumbler Keys

Our Pin Tumbler locks utilize either the National NA12 (D4291) or the Corbin R1 keyways. These flat brass 4 and 5 pin keys are widely available through locksmith distribution for key duplication.

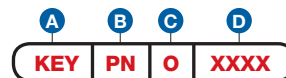
Kenstan Pin Tumbler Keys can be ordered by referencing the stamp number on the key. Keys may be stamped with the key number itself (915 or 4T2) or a stamp number representing a key number (such as a **2** stamp representing a 915 or 4T2). Keys duplicated by a locksmith will usually not carry over the stamp number – we may need a photocopy of the key faxed or a key sent to us to process your order for keys. Master keys will have **Master** stamped on the key bow; grand master keys will have **GMK** stamped on the key bow.

If keys have been lost or stolen, we can reference the stamp number on the face of the lock (if available) or we can decode a lock that is sent to our factory.



Item Number

To determine your item number enter the **RED** option code for each section as in the example below.



A Item
KEY Key

B Core Type
PN National Keyway
PC Corbin Keyway

C Key Function
O Operating
M Master
G Grand Master

D Key Code
XXXX Specific
Up to 4 digits
A Any
Kenstan assigns

- 1. Pricing:** Kenstan Lock reserves the right to institute price adjustments based upon fluctuation of material costs without prior notice. Orders, or balances of orders, that have not shipped within 6 months from the original order date may be subject to a price review.
- 2. Payment Terms:** Payment must be made at time of purchase, unless otherwise approved by Kenstan with terms of Net 30 Days from the date of the invoice. A service charge of 1.5% per month will be charged on overdue accounts.
- 3. Shipping:** Please be sure to specify your preferred shipping method on every order. For all orders received without shipping instructions, Kenstan will use our discretion to make carrier selection based upon the most economical method of shipment available to meet your required in house date. Kenstan is not responsible for risk of loss or damage to products in transit with the selected carrier.
- 4. Deliveries:** At Kenstan, we assemble every lock to order and strive to meet your requested in-house date. Our standard lead time is to ship within two weeks from the receipt of your order. Rush orders and emergency services are available. Unless specifically prohibited in writing by the purchaser, Kenstan reserves the right to make partial shipments of any order.
- 5. Inspection:** Kenstan Lock inspects all products in accordance with our standard quality control procedures. Upon receipt and inspection by the purchaser, any parts proven to be defective or not as ordered may be returned to Kenstan for repair or replacement following the conditions in the "Returned Goods" section (#6) below.
- 6. Returned Goods:** Product replacement or account credit for any returned goods will be made solely at the discretion of Kenstan and will only be accepted upon the issuance of a Return Authorization number from Kenstan's Customer Service Department. Merchandise proven to be defective, due to faulty material and/or workmanship, may be returned for full replacement or credit. Any product ordered incorrectly by the customer may be accepted for return and subject to a 50% handling charge. Locks made with special or out-of production parts are not returnable, unless prior arrangements have been made. Returned merchandise that is damaged in transit, due to inadequate return packaging, will not be accepted.
- 7. Warranty:** Kenstan Lock warrants, for a period of one year from delivery, that our products are free from defects in material and workmanship and makes no other warranties, expressed or implied, including but not limited to the degree of security or the purchaser's application or use of our product. Kenstan Lock Co. will not warranty any locks or parts that were modified outside of our factory. In the event of a product defect, Kenstan shall only be responsible to the extent of the cost of our product, and will not accept any claims for labor or loss of merchandise.
- 8. Cancellation:** If all or any part of an order is cancelled before the completion of the product assembly by Kenstan, the purchaser shall be responsible for payment of all assembled items as well as any special parts ordered for items remaining unassembled at the time of cancellation. If pricing on the original order was based upon Kenstan's quantity discount, a partial cancellation may affect the pricing on items already shipped and invoiced and a price adjustment will be made.
- 9. Catalog Dimensions and Sample Policy:** Please be aware that all lock and part drawing dimensions carry a tolerance of plus or minus 1/16" and are for reference only. Please contact us for actual dimensions. All specifications are subject to change without notice. Samples products are available upon request.