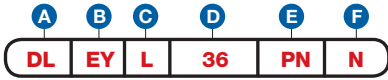


Item Number

To determine your item number enter the **RED** option code for each section as in the example below.



- A Lock Style**
DL Drawer/Door Lock

- B Core Type**
EY Ktronic

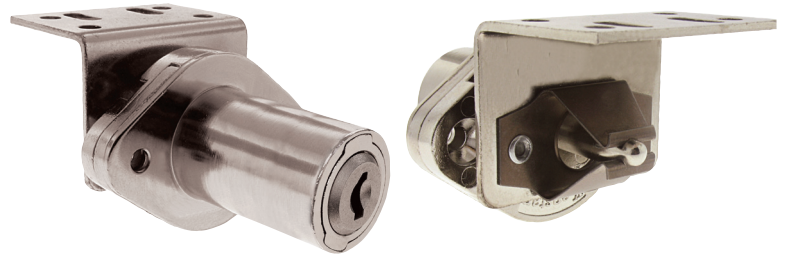
- C Housing Length**
L 1-7/16"

- D Bolt Type**
SNAP BOLT
36 3/4"

- E Plating Finish (Housing)**
Core will always be Satin Nickel finish.
Extended lead-time and plating lot charges **may** apply to Special and Custom finishes.
 - PN** Polished Nickel
 - SN** Satin Nickel
 - PB** Polished Brass
 - SB** Satin Brass
 - BL** Matte Black
 - ST** Statuary Bronze
 - CF** Custom Finish

- F Key Retaining**
N No

Note: Keys are not included with this lock. See page EY 11 to order keys.



All dimensions shown are in the locked position.

HOUSING LENGTH

