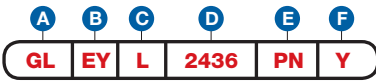


## Price List and Data Sheet

### Item Number

To determine your item number enter the **RED** option code for each section as in the example below.



**A Lock Style**  
**GL** Gang Lock

**B Core Type**  
**EY** Ktronic

**C Housing Length**  
**L** 1-7/16"

**D Mount Style/Bar Length**

Notch for Pin must be on Bottom of Drawer	<b>FRONT MOUNT LOCKED UP</b>	
	<b>2424</b>	24"
	<b>2436</b>	36"
	<b>2448</b>	48"
	<b>24CL</b>	Custom
	<b>24NO</b>	No Bar
	<b>SIDE MOUNT LOCKED UP</b>	
	<b>2624</b>	24"
	<b>2636</b>	36"
	<b>2648</b>	48"
<b>26CL</b>	Custom	

**E Plating Finish (Housing)**  
Core will always be Satin Nickel finish. Extended lead-time and plating lot charges may apply to Special and Custom finishes.

Special Finish	<b>PN</b>	Polished Nickel
	<b>SN</b>	Satin Nickel
	<b>PB</b>	Polished Brass
	<b>SB</b>	Satin Brass
	<b>BL</b>	Matte Black
	<b>ST</b>	Statuary Bronze
	<b>CF</b>	Custom Finish

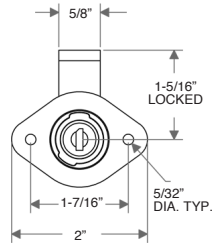
**F Key Retaining**

<b>N</b>	No
<b>Y</b>	Yes

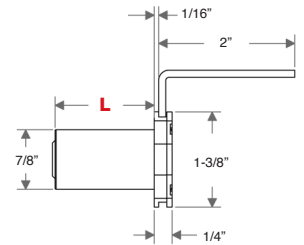
**Note:** Keys are not included with this lock. See page EY 11 to order keys.

Throw (distance bolt travels from the locked to unlocked position) is 7/16".

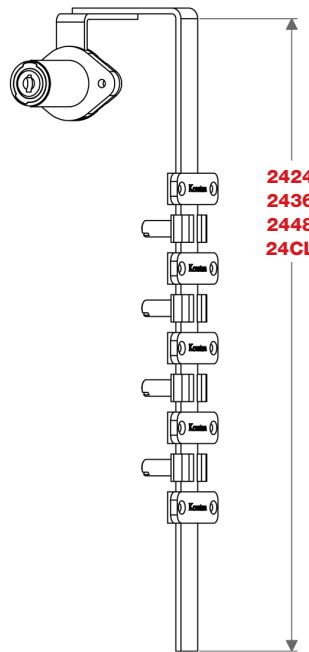
#### FRONT MOUNT - FRONT VIEW



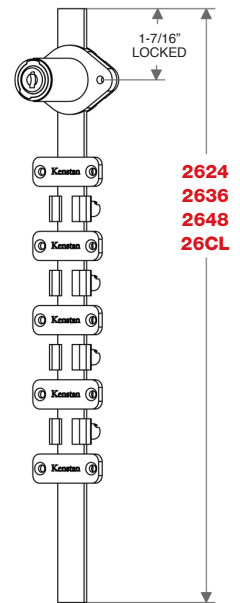
#### FRONT MOUNT - SIDE VIEW



#### FRONT MOUNT (Shown with a Gang 3C Kit)

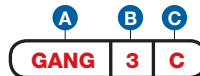


#### SIDE MOUNT (Shown with a Gang 3C Kit)



### Gang Lock Packages

To determine your item number enter the **RED** option code for each section as in the example below.



**GANG 3C** A kit with three adjustable stops, three 1-1/8" pins, three lock washers, and four closed bar guides.

**A Package**  
**GANG**

**B Number of Drawers**

<b>2</b>
<b>3</b>
<b>4</b>

**C Pin Length**

<b>A</b>	5/8"
<b>B</b>	3/4"
<b>C</b>	1-1/8"
<b>D</b>	1-7/8"

