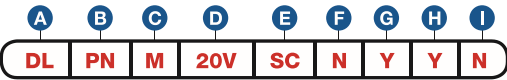


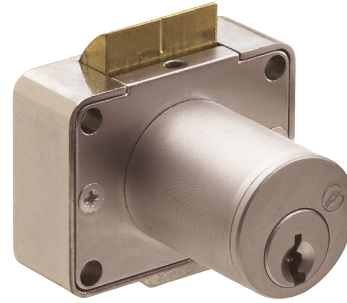
Price List and Data Sheet

Item Number

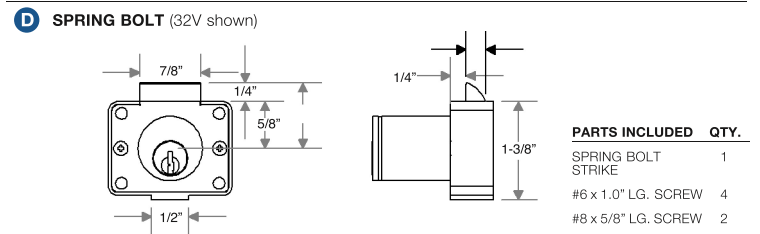
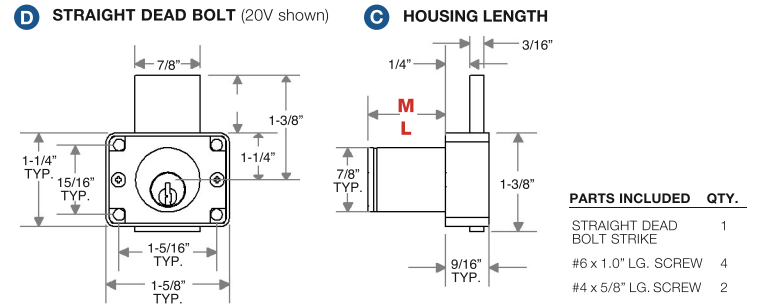
To determine your item number enter the **RED** option code for each section as in the example below.



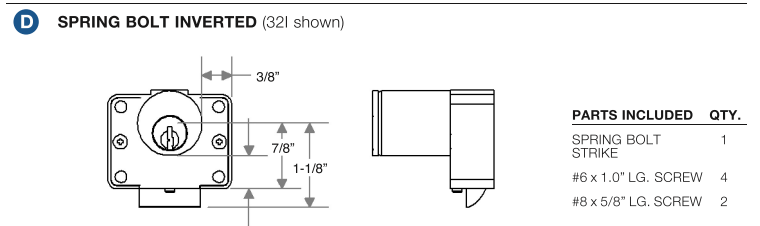
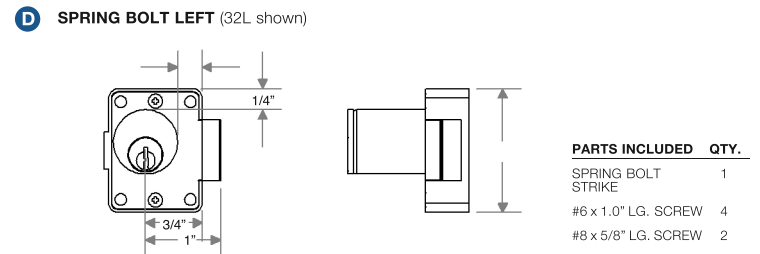
A	Lock Style	DL Drawer/Door Lock
B	Core Type	PN National Keyway PC Corbin Keyway
C	Housing Length	M 1" L 1-1/2"
D	Bolt Type	STRAIGHT DEAD BOLT 20R Right 20L Left 20I Inverted 20V Vertical SPRING BOLT 32R Right 32L Left 32V Vertical 32I Inverted
E	Plating Finish	SC Satin Chrome SB Satin Brass CF Custom Finish
F	Key Retaining	*Option available only on Straight Bolt model. N No Y* Yes
G	Keyed Different	N No Y Yes
H	Stamp Lock	N No Y Yes
I	Master Keyed	N No Y Yes G Grand Master



All dimensions shown are in the locked position.



These spring bolt locks can be converted to Vertical, Inverted, Left or Right hand orientation.



LOCK PARTS

