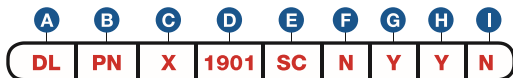


Item Number

To determine your item number enter the **RED** option code for each section as in the example below.



- A Lock Style**
DL Drawer/Door Lock

- B Core Type**
PN National Keyway

- C Housing**
X No Option

- D Bolt Type**
T BOLT
1901 1-1/4"

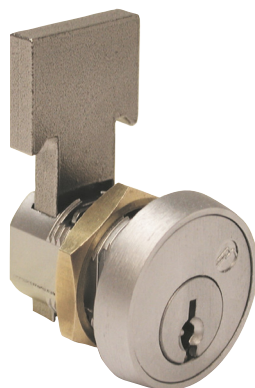
- E Plating Finish**
SC Satin Chrome
CF Custom Finish

- F Key Retaining**
N No

- G Keyed Different**
N No
Y Yes

- H Stamp Lock**
N No
Y Yes

- I Master Keyed**
N No
Y Yes
G Grand Master



"Throw" (distance bolt travels from the locked to unlocked position) is 25/32".
All dimensions shown are in the locked position.

D "T" BOLT LOCK

