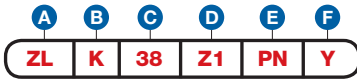


Item Number

To determine your item number enter the **RED** option code for each section as in the example below.



A Lock Style
ZL Z Bolt Lock

B Core Type
K Keymatic

C Housing Style
38 Sliding Door Dead Bolt

D Plunger Type/Length

SMALL HOUSING BOLT

Z1 5/16" Std.
Z2 1/2"
Z3 13/16"

LARGE HOUSING BOLT

Z5 5/16" Std.
Z6 1/2"

E Plating Finish
Extended lead-time and plating lot charges may apply to Special and Custom finishes.

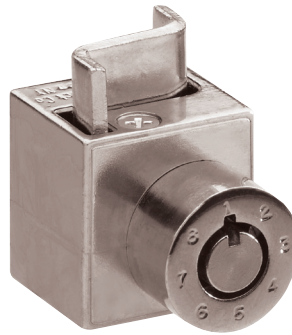
Special Finish

PN Polished Nickel
SN Satin Nickel
PB Polished Brass
SB Satin Brass
BL Matte Black
ST Statuary Bronze
CF Custom Finish

F Key Retaining

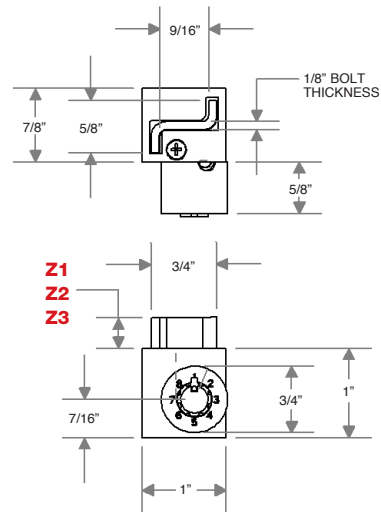
N No
Y Yes

Note: Keys are not included with this lock. See page K14 to order keys.



All dimensions shown are in the locked position.

D SMALL HOUSING



D LARGE HOUSING

