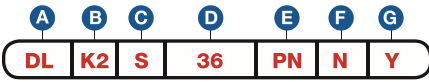


Item Number

To determine your item number enter the **RED** option code for each section as in the example below.



A Lock Style

DL Drawer/Door Lock

B Core Type

K2 K² Keymatic Pull

C Housing Length/Style

STANDARD

S 13/16"
M 1-1/16"
L 1-3/16"

LOW PROFILE

SL 13/16"
ML 1-1/16"
LL 1-3/16"

D Bolt Type

SNAP BOLT

36 3/4"

E Plating Finish

Extended lead-time and plating lot charges may apply to Special and Custom finishes.

Special Finish	{	PN Polished Nickel
		SN Satin Nickel
		PB Polished Brass
		SB Satin Brass
		BL Matte Black
		ST Statuary Bronze
		CF Custom Finish

F Key Retaining

N No

G Insert Core

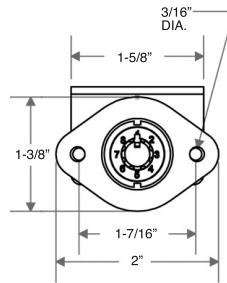
Y Yes
N Pack Core Separately
ND Ship Core to Different Location

Note: Keys are not included with this lock. See page 16 to order keys.

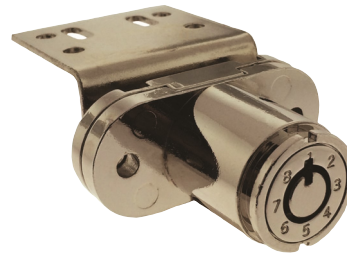
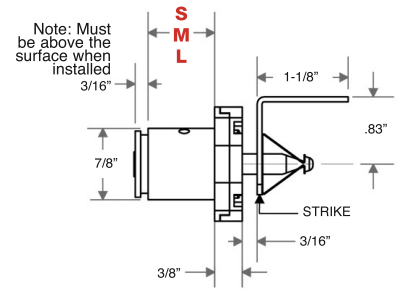


All dimensions shown are in the locked position.

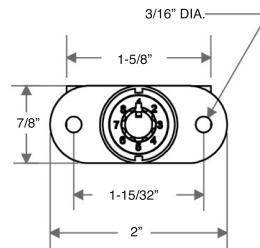
D STANDARD SNAP BOLT



C HOUSING LENGTH



D LOW PROFILE SNAP BOLT



C HOUSING LENGTH

