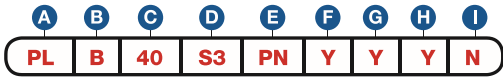


Data Sheet

Item Number

To determine your item number enter the **RED** option code for each section as in the example below.



- A Lock Style**
PL Plunger Lock

- B Core Type**
B Kenstan B Keyway
BR Kenstan B Keyway Removable Core
D 54G Keyway
DR 54G Keyway Removable Core

- C Housing Style**
40 Oval Flange

- D Plunger Type/Length**
S SERIES
S1 3/8"
S2 7/16"
S3 5/8"
T SERIES
T1 1/4"
T3 9/16"
ROUND SERIES
R1 3/8"
R2 7/16"
R3 5/8"
ROUND EXTENDED SERIES
R4 1-3/16"
R5 1-5/16"
R6 1-11/16"
R7 2-7/16"

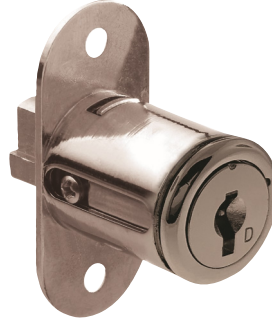
- E Plating Finish**
 Extended lead-time and plating lot charges may apply to Special and Custom finishes.
PN Polished Nickel
SN Satin Nickel
PB Polished Brass
SB Satin Brass
BL Matte Black
ST Statuary Bronze
CF Custom Finish

- F Key Retaining**
N No
Y Yes

- G Keyed Different**
N No
Y Yes

- H Stamp Lock**
N No
Y Yes

- I Master Keyed**
N No
Y Yes



All dimensions shown are in the locked position.

