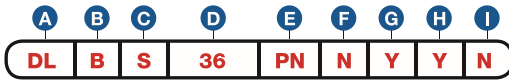




Item Number

To determine your item number enter the **RED** option code for each section as in the example below.



A Lock Style

DL Drawer/Door Lock

B Core Type

B Kenstan B Keyway
BR Kenstan B Keyway Removable Core
D 54G Keyway
DR 54G Keyway Removable Core

C Housing Length/Style

STANDARD
S 13/16"
M 1-1/16"
L 1-3/16"
LOW PROFILE
SL 13/16"

D Bolt Type

SNAP BOLT
36 3/4"

E Plating Finish

Extended lead-time and plating lot charges may apply to Special and Custom finishes.

PN Polished Nickel
SN Satin Nickel
PB Polished Brass
SB Satin Brass
BL Matte Black
ST Statuary Bronze
CF Custom Finish

F Key Retaining

N No

G Keyed Different

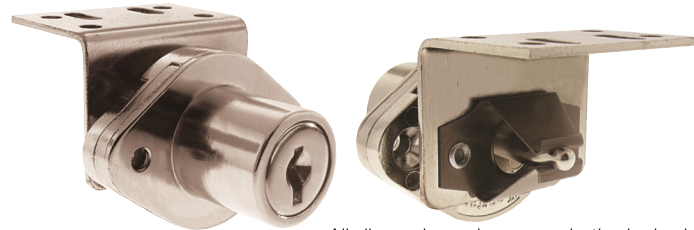
N No
Y Yes

H Stamp Lock

N No
Y Yes

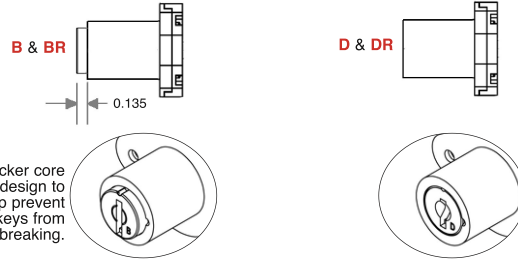
I Master Keyed

N No
Y Yes

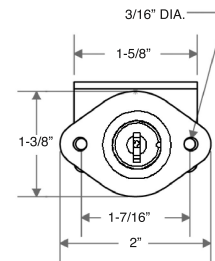


All dimensions shown are in the locked position.

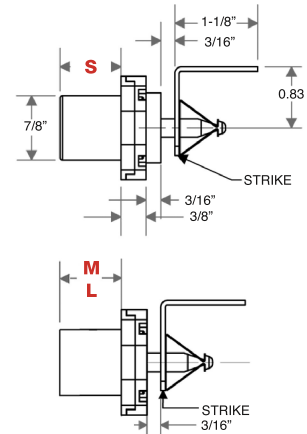
B CORE TYPE



D STANDARD SNAP BOLT



C HOUSING LENGTH



D LOW PROFILE SNAP BOLT

