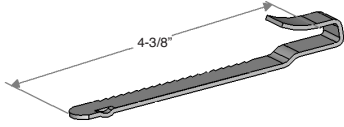


Price List and Data Sheet

Ratchet Bars/Miscellaneous

STANDARD BAR FOR RATCHET LOCK

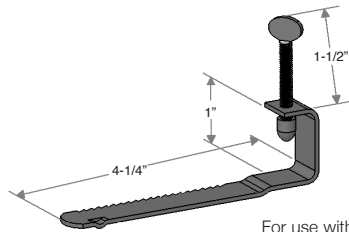
Item Number						Plating Finish*
A	U	60	BAR	XB1	STD	PN CF



For use with **D, K, K2** and **M** Ratchet Locks.

ADJUSTABLE BAR FOR RATCHET LOCK

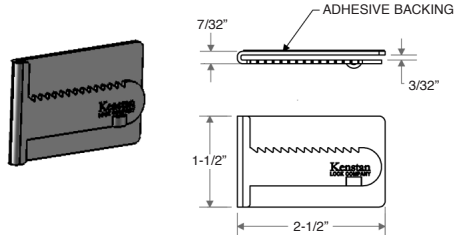
Item Number						Plating Finish*
A	U	60	BAR	XB2	ADJ	PN CF



For use with **D, K, K2** and **M** Ratchet Locks.

STICK ON BAR FOR RATCHET LOCK

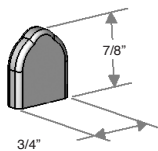
Item Number						Plating Finish*
A	U	60	BAR	XB5	STD	PN CF



For use with **D, K, K2** and **M** Ratchet Locks.

RUBBER CAM COVER

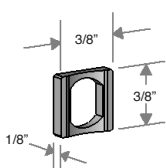
Item Number						Plating Finish*
A	U	CL	CVR	CAM	RBR	BL



For use with Cams.

CAM ADAPTER

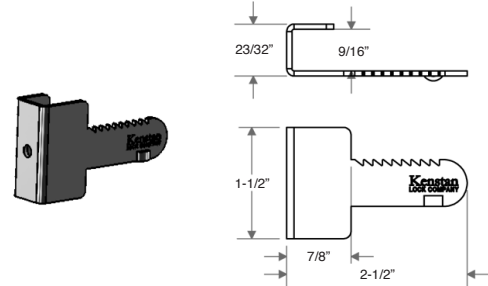
Item Number					Plating Finish*
A	U	CL	ADP	CAM	



Use to mount Standard Cams on to **K, K2, M, S** and **V** Cam Locks.

SCREW ON BAR FOR RATCHET LOCK

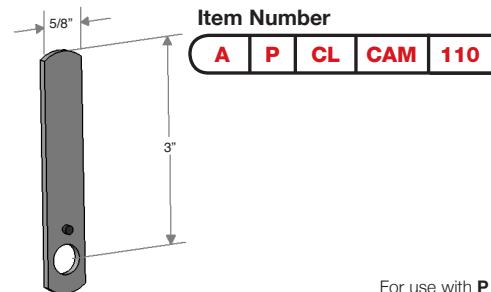
Item Number						Plating Finish*
A	U	60	BAR	XB6	STD	PN CF



Made in the U.S.A

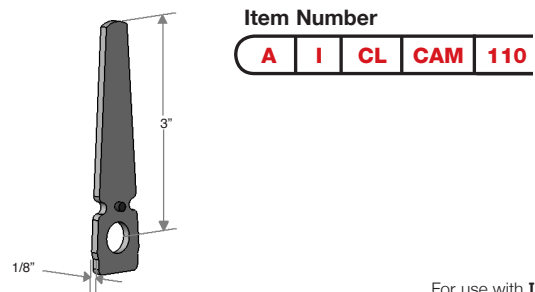
For use with **D, K, K2** and **M** Ratchet Locks.

3" CAM



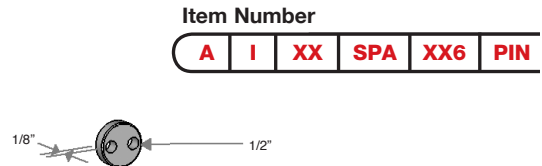
For use with **P** Cam Locks.

3" I.C. CORE CAM LOCK CAM



For use with **I** Cam Locks.

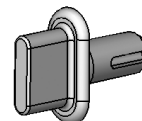
6 PIN CORE SPACER



For use with **I** Locks.

RED PLASTIC ACTUATOR

Item Number						Plating Finish*
A	I	XX	ACT	XXX	PLA	RD



For use with **I** Locks.

*Plating Finish: **PN** Polished Nickel; **SN** Satin Nickel; **PB** Polished Brass **BL** Matte Black; **ZN** Zinc; **CF** Custom Finish