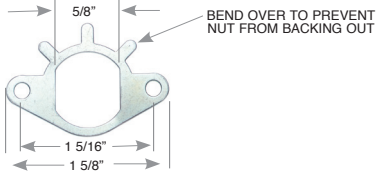


Price List and Data Sheet

ANTI-ROTATION MOUNTING PLATE/ 3 FINGER WASHER

Item Number

A	U	CL	PLT	ANR	XXX	BN
----------	----------	-----------	------------	------------	------------	-----------

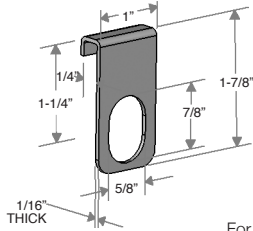


For use with **D, K, M, S, V, P** and **E** Cam Lock.

ANTI-ROTATION "J" BRACKET

Item Number

A	U	CL	JBK	ANR	026	PN
						PB
						BL
						ST
						CF



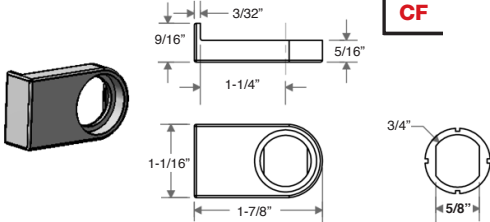
For use with **D, K, M, S, V, P** and **E** Cam Locks.
Hole must be drilled 1-1/4" from edge of glass.

Made in the U.S.A

ANTI-ROTATION "L" BRACKET

Item Number

A	U	CL	LBK	XXX	125	PN
						PB
						BL
						ST
						CF

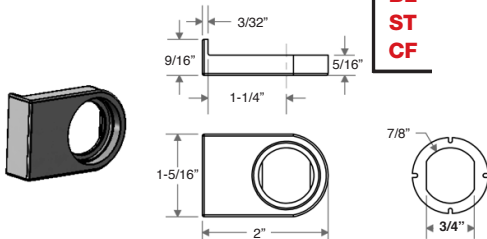


This bracket can be mounted on the top, bottom, left or right of the glass edge. For use with **D, K, M, S, V, P** and **E** Cam Locks.

ANTI-ROTATION "L" BRACKET (FOR K2 CAM LOCKS ONLY)

Item Number

A	K2	CL	LBK	XXX	125	PN
						PB
						BL
						ST
						CF

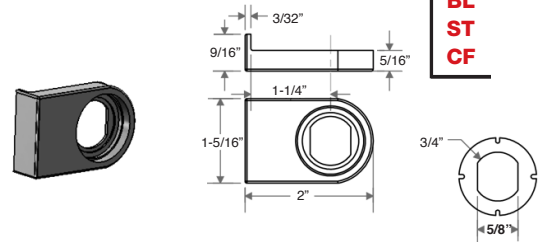


This bracket can be mounted on the top, bottom, left or right of the glass edge. For use with **K2** Cam Locks.

ANTI-ROTATION "L" BRACKET (FOR K3 CAM LOCKS ONLY)

Item Number

A	K3	CL	LBK	XXX	125	PN
						PB
						BL
						ST
						CF

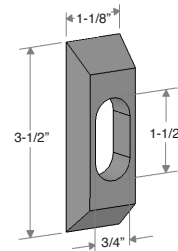


This bracket can be mounted on the top, bottom, left or right of the glass edge. For use with **K3** Cam Locks.

SMALL SUPPORT PLATE

Item Number

A	I	40	PLT	XXX	SML	PC
						SC
						PB
						CF

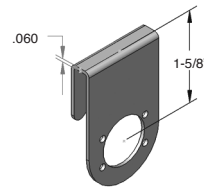


For use with **I40** Plunger Locks.
Screws are included at no charge.

"J" BRACKET

Item Number

A	U	50	JBK	ANR	XXX	PN
						PB
						SN
						BL
						CF



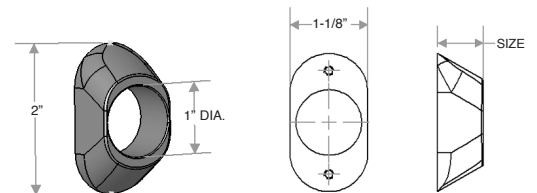
For use with **D, K, K2, M** and **S50** Plunger Locks.
Hole must be drilled 1-1/2" from edge of glass.

Made in the U.S.A

MOUNTING PLATE

Item Number

A	I	40	PLT	XXX	067	5/8"	PN
					137	1-5/16"	



For use with **D, K, K2, M, S, V** and **E40** Plunger Locks.

*Plating Finish: **PN** Polished Nickel; **SN** Satin Nickel; **PB** Polished Brass; **BL** Matte Black; **PC** Polished Chrome; **SC** Satin Chrome; **RD** Red; **CF** Custom Finish